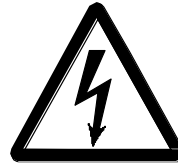
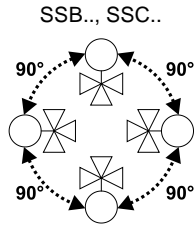
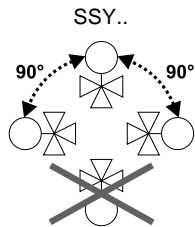


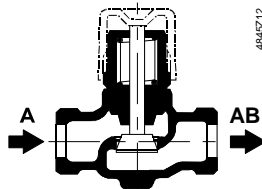
- de** Montageanleitung
- en** Mounting instructions
- fr** Instructions de montage
- sv** Monteringsinstruktion
- nl** Montage-handleiding
- it** Istruzioni di montaggio
- fi** Asennusohje
- es** Instrucciones de montaje
- da** Monteringsvejledning
- pl** Instrukcja montażu
- cz** Montážní návod
- hu** Szerelési útmutató
- tr** Montaj talimatları
- el** Οδηγίες εγκατάστασης
- ru** Инструкция по установке
- zh** 安裝指導

- Ventile PN 16
- Valves PN 16
- Vannes PN 16
- Ventiler PN 16
- Afsluiters PN 16
- Valvole PN 16
- Venttiilit PN 16
- Válvulas PN 16
- Ventiler PN 16
- Zawory PN 16
- Ventily PN 16
- Szelepek PN 16
- PN 16 vanalar
- Βάνες PN 16
- Клапан PN16
- 阀门 PN 16

V..P45..
V..P45..S
VVP45..N



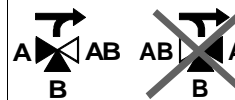
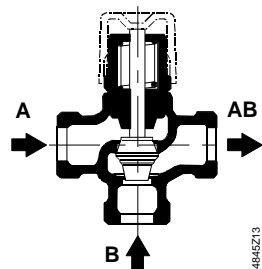
VVP45.10-0.25...VVP45.15-2.5
VVP45..S
VVP45.15-2.5N / VVP45.20-4N



A → AB 0...100%

VVP45.25-10...VVP45.40-25
VVP45.25-6.3N

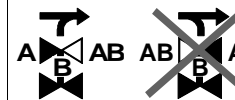
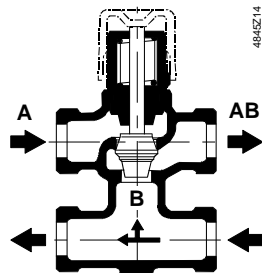
VXP45.10-0.25...VXP45.25-6.3



A → AB 0...100%
B → AB 70...0%

VXP45.25-10...VXP45.40-25

VMP45.10-0.25...VMP45.20-4
VMP45..S

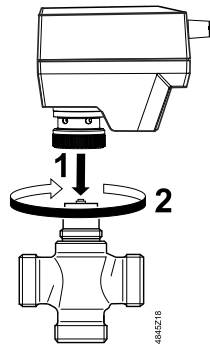


A → AB 0...100%
B → AB 70...0%

V..P45.. / V..P45..S + SSB..
VVP45..N + SSY..

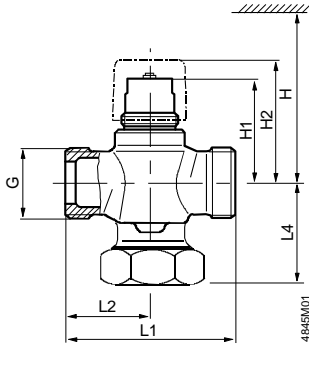


$$k_{vs} \leq 6.3 \text{ m}^3/\text{h}$$

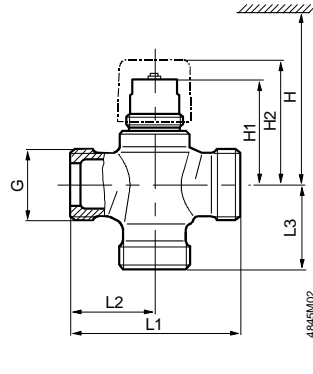


V..P45.. + SSC..

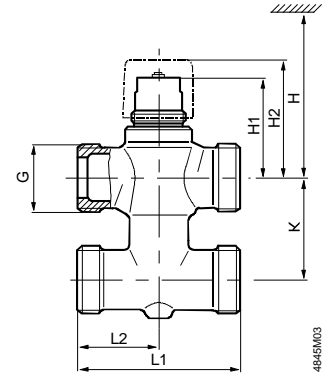
VVP45..
VVP45..S
VVP45..N



VXP45..



VMP45..
VMP45..S



	DN	G [inch]	H	H1	H2	L1	L2	L3	L4	K	VVP..	VXP..	VMP..		
			[mm]										[kg]		
V..P45.10-0.25...1.6, ..S	10	G ½B	> 200	44.9	≈ 54	60	30	30	20	40	0.26	0.28	0.36		
V..P45.15-2.5	15	G ¾B		44.9	≈ 54	65	32.5	32.5	20	40	0.30	0.34	0.46		
V..P45.15-2.5S	15	W 1 ⅛-14		44.9	≈ 54	65	32.5	-	20	40	0.30	-	0.46		
V..P45.20-4	20	G 1B		48.9	≈ 58	80	40	40	24	50	0.42	0.48	0.64		
VVP45.25-6.3 / VXP45.25-6.3	25	G 1 ½B	> 280	51	≈ 60	80	40	40	49		0.76	0.64			
VVP45.25-10 / VXP45.25-10	25	G 1 ½B		62.5	≈ 71	105	52.5	52.5	62.5		1.46	1.29			
VVP45.32-16 / VXP45.32-16	32	G 2B		69	≈ 78	105	52.5	52.5	63.5		1.95	1.70			
VVP45.40-25 / VXP45.40-25	40	G 2 ¼B		72	≈ 81	130	65	65	76		2.75	2.40			
VVP45.15-2.5N	15	G ¾B	> 280	62	≈ 71	65	32.5	-	20		0.30				
VVP45.20-4N	20	G 1B		66	≈ 75	80	40	-	24		0.42				
VVP45.25-6.3N	25	G 1 ½B		68	≈ 77	80	40	-	49		0.76				
ALG., SERTO SO 21..				DN	G	R	Rp	L	T	SERTO SO 21..	D				
ALG..					[inch]			[mm]	[mm]	www.serto.com	[mm]				
	ALG132		VVP45.10-0.25...1.6	10	G ½	R ¾		≈ 24	≈ 9	SO 00021-12-1/2"	12				
	ALG133		VXP45.10-0.25...1.6							SO 00021-14-1/2"	14				
2 x ALG132		VMP45.10-0.25...1.6	SO 00021-15-1/2"							15					
	ALG142		VVP45.15-2.5, ..N	15	G ¾	R ½		≈ 29.5	≈ 12	SO 00021-17-3/4"	17				
	ALG143		VXP45.15-2.5							SO 00021-18-3/4"	18				
	ALG152	ALG152B	VVP45.20-4, ..N	20	G 1		Rp ½	≈ 23	≈ 13						
	ALG153	ALG153B	VXP45.20-4												
2 x ALG152	2 x ALG152B	VMP45.20-4													
	ALG202	ALG202B	VVP45.25-6.3, ..N	25	G 1 ¼		Rp ¾	≈ 25	≈ 15						
	ALG203	ALG203B	VXP45.25-6.3												
	ALG252	ALG252B	VVP45.25-10	25	G 1 ½		Rp 1	≈ 27	≈ 17						
	ALG253	ALG253B	VXP45.25-10												
	ALG322	ALG322B	VVP45.32-16	32	G 2		Rp 1 ¼	≈ 32	≈ 19						
	ALG323	ALG323B	VXP45.32-16												
	ALG402	ALG402B	VVP45.40-25	40	G 2 ¼		Rp 1 ½	≈ 32	≈ 19						
	ALG403	ALG403B	VXP45.40-25												
	Conex 63 + Conex 65			DN	G [inch]						D [mm]				
	E--10CO063-- + E--10CO065--		V..P45.10-..S	10	G ½							15			
	G--10CO063-- + G--10CO065--		V..P45.15-2.5S	15	W 1 ⅛-14							22			